

Msomi would love to play Winnie

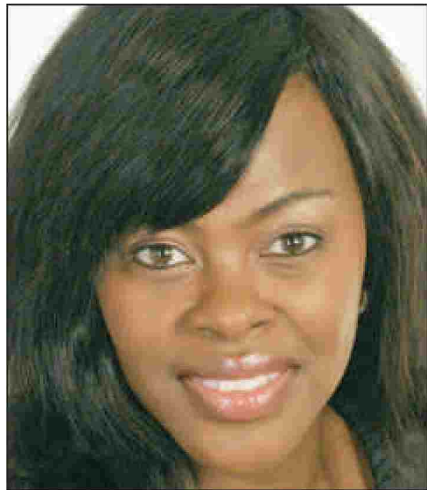


PHOTO: SUPPLIED

Dawn Msomi plays Anele on Mzansi Magic's *iNkaba*.

SIYATHEMBA BEN

WHEN KZN actress Dawn Msomi left her job in the corporate world she didn't know what the future held for her. All she knew was that she was unhappy and needed to feed her passion for acting. This year, fate landed her a role on Mzansi Magic's telenova, *iNkaba*, and she is enjoying every minute of it.

Her character, Anele, is an energetic domestic worker, who is very forward and can be a bit bossy sometimes, making Msomi nothing like her on-screen persona.

"I am an introvert and like to keep to myself. But I can also be vocal when I need to be," she said.

In the beginning, Msomi's character was an extra with no lines. "I would just put the tray on the table and walk out," she says. But the role grew and she started getting more lines.

"Being on *iNkaba* is amazing. I work with people who I have always admired," Msomi said. One of those people is the legendary South African actor, John Kani. "Working with him is an honour," she said.

Msomi revealed that she'd always wanted to act. As a young girl, she was involved in many plays at church and after school she enrolled at the then Technikon Natal (now Durban University of Technology) to study drama.

She performed in a number

of stage plays, including *Peace in The Valley* at the Playhouse in 2000, a work directed by one of KwaZulu-Natal's most acclaimed playwrights, Jerry Pooe.

Msomi also worked as a radio presenter and newsreader at Ukhozi FM, before moving to the corporate world. "I missed acting, but my family had to be taken care of," said the married mother of four.

In 2010, she decided to focus on her family and acting career, and feels her sacrifices have paid off.

As for what the future holds, Msomi would love to play Winnie Mandela or Nkosazana Zuma. "They are strong and powerful characters," she said.